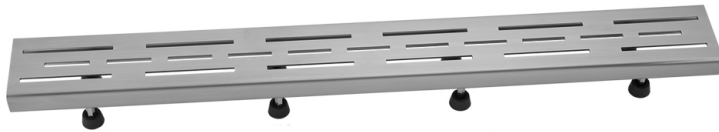


24" Channel Drain Slotted Line Hole Grate Model #: 6220-24-

FEATURES:

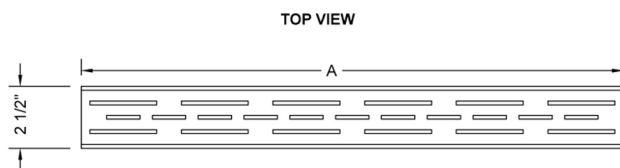
- 304 stainless steel construction
- Nominal Size: 24"
- Key included to remove grate for easy cleaning
- Adjustable feet for perfect installation
- JACLO channel drain body sold separately
- Standard finishes: BSS & PSS. Additional finishes available: MBK, WH, & JACLO-COLOR. Call for pricing and availability



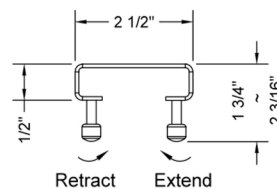
AVAILABLE FINISHES:

Polished Stainless (PSS) Brushed Stainless (BSS)

SPECIFICATION DRAWING:



JACLO LINE GRATE ONLY		
PART. #	DESCRIPTION	A
6220-24-XXX	LINE GRATE	22 1/4"
6220-32-XXX	LINE GRATE	30 1/8"
6220-36-XXX	LINE GRATE	34 1/8"
6220-42-XXX	LINE GRATE	42"
6220-48-XXX	LINE GRATE	46"
6220-60-XXX	LINE GRATE	57 3/4"



COMPLIANCES:

Complies with: ASME A112.18.2-2015/CSA B125.2-15